

# Watershed activities and games

Can you find the hidden words in the puzzle?

|                |             |                 |             |
|----------------|-------------|-----------------|-------------|
| AUGHWICK CREEK | DEER        | POLLUTION       | TRIBUTARIES |
| BEAVER         | FISHING     | RECYCLE         | VOLUNTEER   |
| BROOK TROUT    | FLOODPLAIN  | RIPARIAN BUFFER | WATERSHED   |
| CONSERVATION   | GROUNDWATER | RUNOFF          | WELL        |
| COWANS GAP     | LITTERING   | SOIL EROSION    | WILDLIFE    |
| DAM            | MONITORING  | STORMWATER      | WREN        |

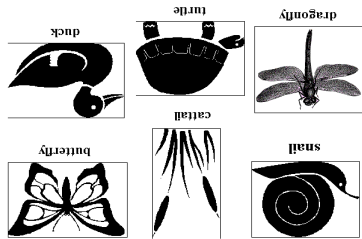
R G V U A T D E L C Y C E R W  
 F F O N U R E F P G W R E N I  
 F O G S G Y H I T R U F I F L  
 J B N C H D S S R O F I S R D  
 R F I O W M R H I U D M O E L  
 V L R W I Z E I B N A O I T I  
 O O E A C T T N U D D N L A F  
 L O T N K A A G T W Y I E W E  
 U D T S C I W V A A O T R M Q  
 N P I G R T U O R T K O O R B  
 T L L A E X J W I E X R S O E  
 E A P P E W D E E R S I I T A  
 E I S M K F E L S M R N N S V  
 R N O I T U L L O P R G O B E  
 H C Z M C N H D S D G Z A C R

ANSWER  
KEY

Learn to save money and help  
the environment, go to  
[www.friendsoflittleaughwick.org](http://www.friendsoflittleaughwick.org)

CROSSWORD PUZZLE

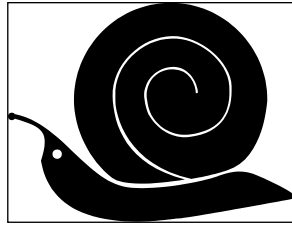
- |                |                |
|----------------|----------------|
| 16. Cattails   | 7. Runoff      |
| 15. Recycling  | 6. Well        |
| 14. Brook      | 5. Chlorine    |
| 13. Fertilizer | 4b. Watershed  |
| 12. Stormwater | 4a. Wastewater |
| 11. Flood      | 3. Erosion     |
| 10. Canoe      | 2. Valley      |
| 9. Water       | 1. Tributary   |
| 8. Oxygen      |                |



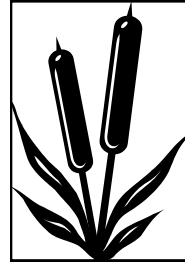
Unscramble the letters to name these watershed inhabitants.

## WORD SCRAMBLE

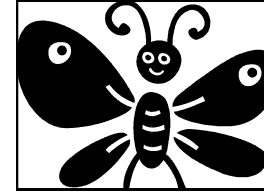
Unscramble the letters to name these watershed inhabitants.



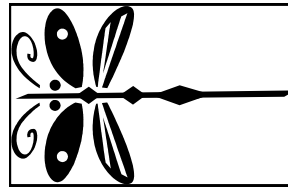
islna



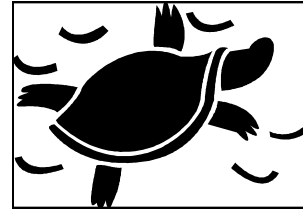
tictlaa



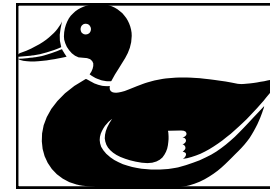
tlubtyfre



fogdnayrl



lrettu



kcdu

## Crossword Puzzle

### Across

- Polluted water that has been used in homes, schools, etc.
- Nonmetallic element used to purify water
- Rainwater or snowmelt that, instead of sinking into the earth, 'runs off' via gutters, storm drains and ditches into creeks, streams, rivers, lakes and the ocean.
- The Native Americans used this type of boat to travel on the local streams and rivers
- An overflow of water onto dry land
- Rain or snow melt that flows over land to surface streams
- This species of native trout lives in high quality waters
- The collection, processing, and reuse of materials that would otherwise be thrown away

### Down

- A stream that flows into a larger stream or other body of water
- Long narrow lowland between mountains
- Is what happens to a stream bank when soil gets washed into the stream
- The land area that drains into a particular lake, river, or ocean
- A deep hole or shaft dug or drilled to obtain water
- An element that humans and fish need to breathe
- A clear, colorless, odorless, and taste less liquid
- A substance put on yards and crops to support plant growth that can cause pollution in streams
- A common wetland plant

TESSERACT'S MAZES "TURTLE"



© Copyright 1998, Network Solution Developers, Inc., All rights reserved.



Clean Water Begins with You and Me...

